



SUPER QUIET BATHROOM FAN-LIGHT COMBINATION

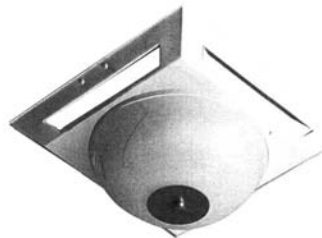
Introducing our new super quiet low sones fan-light combination bathroom exhaust fan. The QB-80LT fan is specially designed for best performance at low noise level. This feature will undoubtedly give you the quietest fan-light in the market place.

Features:

- Attractive styling
- Aluminum/plastic grille
- Heavy gauge non corrosive satin coat construction
- Simplified mounting system
- Low heat generation extends life of lamp and reduces air conditioning cost
- Instant – ON, no flicker
- Save 75% - 81% energy
- Bulb – easy to replace
- Certified by California Energy Commission in accordance with California Law - Title 20.
- Also meets Washington State Ventilation and Indoor Air Quality Code.

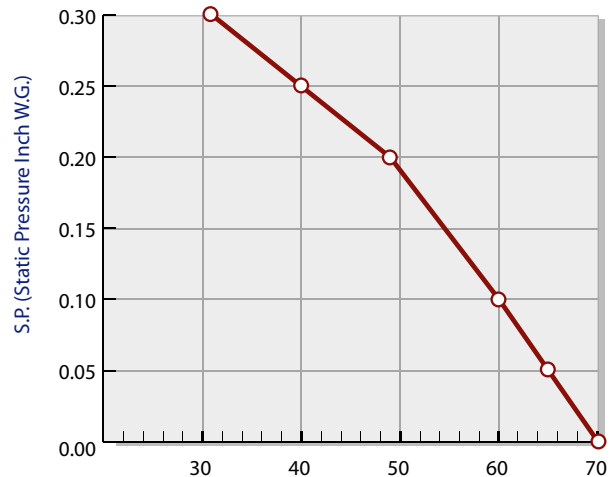


Plastic Backdraft Damper



Optional Dome Light Grille

QB-80LT FAN DATA



Air Flow (CFM - Cubic Feet Per Minute)

ACCESSORIES

Standard:

- Plastic snap-in light grille
- Plastic backdraft damper or metal collar with neoprene damper
- Mounting brackets

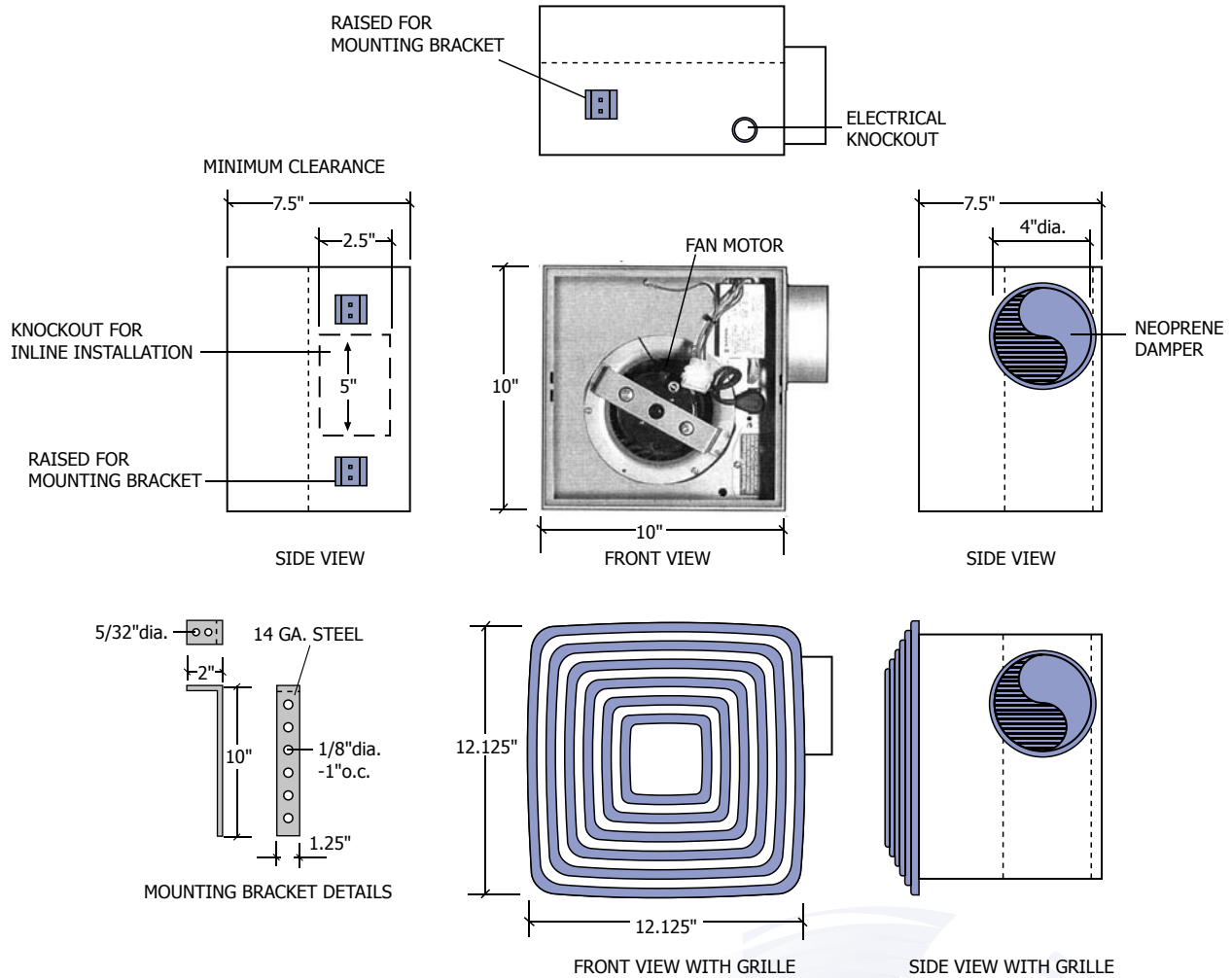
Optional:

- Variable speed control
- Dome light aluminum grille
- Aluminum backdraft damper



Reversomatic Manufacturing Ltd.

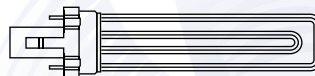
790 Rowntree Dairy Road, Woodbridge, ON Canada L4L 5V3 • Tel: 905-851-6701 • Fax: 905-851-8376
www.reversomatic.com • info@reversomatic.com



HVI CERTIFIED RATINGS

MODEL	SONES	CFM @ 0.10" S.P.
QB-80LT	0.6	60

FLUORESCENT LIGHT BULB - 4 PIN, 26 W (not supplied)



Bulb lasts up to 10,000 hrs. Reduces maintenance cost.
Bulb contains mercury. Dispose it according to local, state & Federal laws & regulations.

FAN DATA

MODEL	MOTOR 120 VAC 60 Hz			CUBIC FEET PER MINUTE						
	RPM	AMPS	WATTS	S.P.	0.00	0.05	0.10	0.20	0.25	0.30
QB-80LT	1080	0.40	31.5	CFM	70	65	60	49	40	31

RPM (Revolution Per Minute) shown is nominal and performance is based on actual speed of test.
 Unit was tested with inlet light grille, backdraft damper and outlet duct.

Contractor:		QB-80LT		
Architect:	Job:	Date	Supersedes	Drawing NO.
Engineer:	Date Submitted:			

Reversomatic Manufacturing Ltd.

790 Rowntree Dairy Road, Woodbridge, ON Canada L4L 5V3 • Tel: 905-851-6701 • Fax: 905-851-8376
 www.reversomatic.com • info@reversomatic.com