

### Heat Exchanger

- Heavy-duty 14 gauge steel, long lasting, high temperature ceramic fiber combustion chamber
- Easy access large diameter clean out ports

### Cabinet

- Foil-faced high density fiberglass insulation reduces heat loss and noise
- Powder painted finish for maximum durability
- Internal filter included

### Blower

- Slide-out design with quick plug-in wiring
- 3 speed PSC permanently lubricated motors with sealed bearings for low maintenance, maximum efficiency, and trouble free performance
- Dynamically balanced blower with resilient motor mounts for smooth and quiet operation

### Burner

- High quality Riello R40 Series burner for efficient combustion
- High temperature stainless steel burner blast tube
- Sound cover
- High efficiency air flow system to provide consistent operation through all operating conditions

### Controls

- Readily available trade components
- 40 VA transformer
- Color coded wiring for easy service
- Transformer and cooling fan relay are factory wired for easy add-on cooling installation

### Venting

- Includes standard barometric damper
- Optional sidewall vent kit

### Accessories

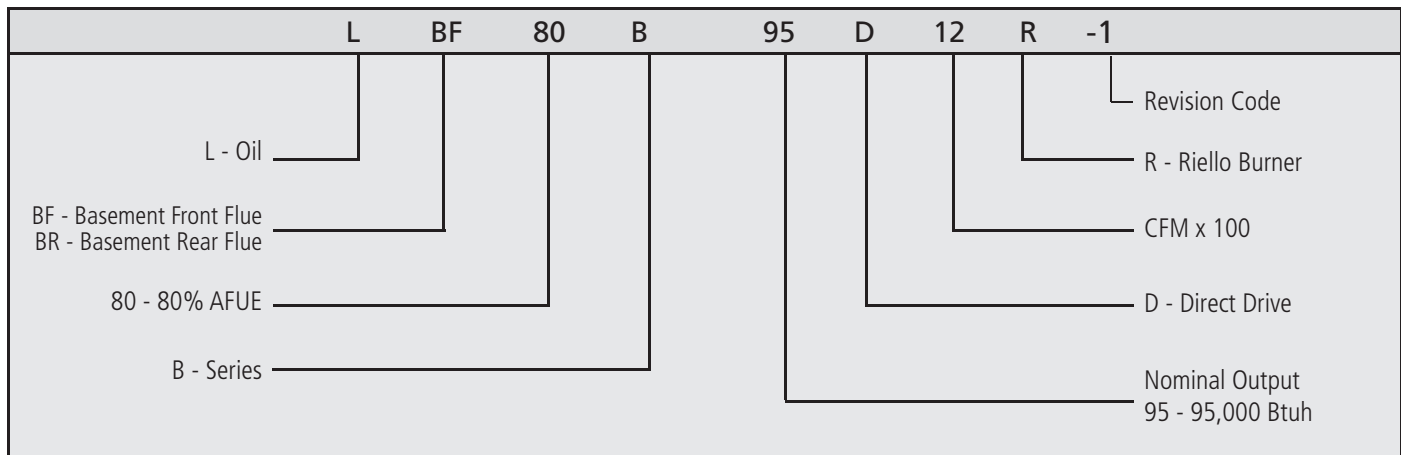
- Coil cabinet
- Cleanout brush kit



### Warranty

- Limited life-time on heat exchanger
- Five year limited on all parts

## Model Number Guide



## Physical and Electrical

Model	Nozzle Size	Input (Btuh)	Output (Btuh)	AFUE	Nom. Cooling Cap.	Flue Dia. (in.)	Filter Size (in.)	Volts/Hz/Phase	Max. Time Delay Breaker or Fuse (amp)	Trans. (V.A.)	Shipping Weight (lb.)
LBF80B57D10R	.50GPH-80°A	70,000	57,000	84	2.0-2.5	6	18 X 19	120/60/1	15	40	250
LBF80B84/95D12R	.65GPH-80°B	105,000	85,000	82	2.0-3.0	6	18 X 19	120/60/1	15	40	250
	.75GPH-80°B	112,000	91,000	82							
LBF80B112/125D20R	.85GPH-80°B	140,000	113,000	81.5	3.0-5.0	6	19 X 21	120/60/1	15	40	285
	1.00GPH-80°B	147,000	120,000	81.5							
LBR80B57D10R	.50GPH-80°A	70,000	57,000	84	2.0-2.5	6	18 X 19	120/60/1	15	40	250
LBR80B84/95D12R	.65GPH-80°B	105,000	85,000	82.5	2.0-3.0	6	18 X 19	120/60/1	15	40	255
	.75GPH-80°B	112,000	91,000	82.5							
LBR80B112/125D20R	.85GPH-80°B	140,000	113,000	82	3.0-5.0	6	19 X 21	120/60/1	15	40	290
	1.00GPH-80°B	147,000	120,000	82							

## Blower Performance Data

Model	Motor Size (hp)	Blower Size	Temp. Rise °F	Blower Speed	CFM @ ext. static pressure - in W.C.				
					.20	.30	.40	.50	.60
LBF80B57D10R	1/3	10 x 6	45 - 75	High	1,150	1,100	1,050	1,000	940
				Med	890	870	840	800	770
				Low	690	680	660	630	590
LBF80B84/95D12R	1/3	10 x 8	45 - 75 <sup>1</sup> 50 - 80 <sup>2</sup>	High	1,490	1,430	1,375	1,300	1,230
				Med	1,370	1,345	1,280	1,230	1,160
				Low	1,190	1,180	1,160	1,120	1,080
LBF80B112/125D20R	3/4	12 x 9	45 - 75 <sup>1</sup> 50 - 80 <sup>2</sup>	High	2,110	2,035	1,970	1,950	1,880
				Med	1,850	1,810	1,750	1,690	1,620
				Low	1,500	1,480*	1,450*	1,420*	1,375*
LBR80B57D10R	1/3	10 x 6	45 - 75	High	1,120	860	1,030	980	920
				Med	885	670	830	800	755
				Low	690	1,410	650	630	590
LBR80B84/95D12R	1/3	10 x 8	50 - 80	High	1,470	1,410	1,340	1,280	1,205
				Med	1,330	1,295	1,250	1,190	1,130
				Low	1,150	1,170	1,125	1,080*	1,030*
LBR80B112/125D20R	3/4	12 x 9	50 - 80	High	2,010	1,961	1,900	1,880	1,800
				Med	1,765	1,720	1,660	1,600	1,560
				Low	1,380	1,350*	1,330*	1,295*	1,230*

<sup>1</sup> Low Fire Nozzle

<sup>2</sup> High Fire Nozzle

\* Not recommended for heating.

Temperature rise may be outside acceptable range.

## Accessories

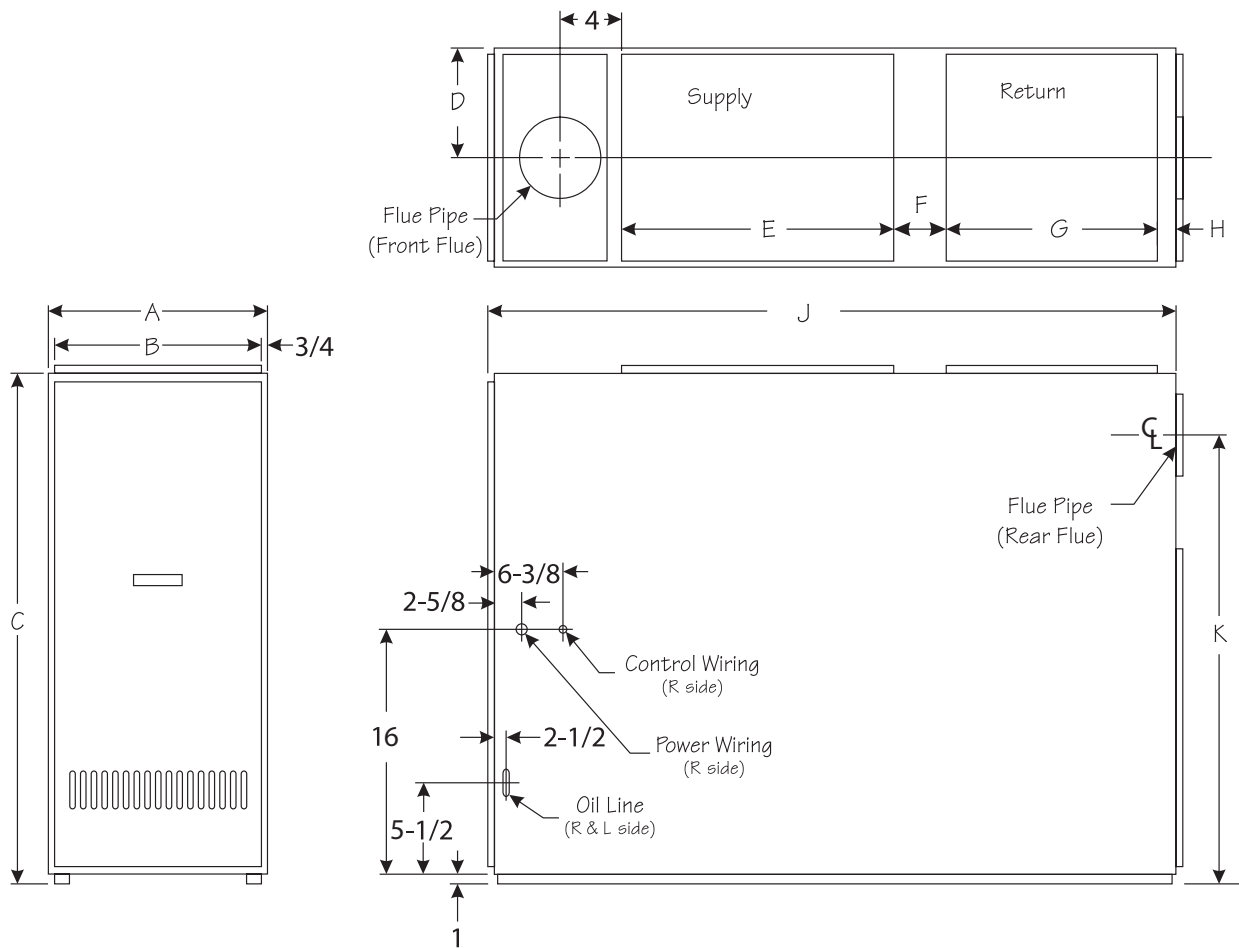
Description	Used with	Kit number
Clean Out Kit	All models	ABRSH380-3
Tjernlund Side Wall Vent Kit <sup>1</sup>	All models	ASVNT522
Field Controls Side Wall Vent Kit <sup>2</sup>	All models	ASVNT523
Evaporator Coil Cabinet	LBF-R8084/95 to 15-1/2" - 17" wide coil	AAOILKDCC19
Evaporator Coil Cabinet	LBF-R8084/95 to U2E58C & LBF-R112/125 to 21" wide coil	AAOILKDCC22
Evaporator Coil Cabinet	LBF-R112/125 to U2E60D & LBR140/168 to 21" - 23" wide coil	AAOILKCDD27
Combustion Air Kit	All Models	ABOOT571
Clean Out Cap Kit	All Models	ACAP570

<sup>1</sup> This can be ordered from Tjernlund, part number SSII.

<sup>2</sup> This can be ordered from Field Controls, part number SWG-5-CK61.

# Dimensions (in.)

Model	A	B	C	D	E	F	G	H	J	K
LBF80B57R	19-1/2	18	37	9-3/4	21	3-1/4	16	1-1/2	52-1/8	N/A
LBF80B84/95R				11-1/4						
LBF80B112/125R	9-3/4									
LBR80B57R	11-1/4	27								
LBR80B84/95R	9-3/4	29								
LBR80B112/125R	22-1/2	21	11-1/4							



(800) 448-5872

www.armstrongair.com

All specifications and illustrations subject to change without notice and without incurring obligations.